

# 2201 Luna Road

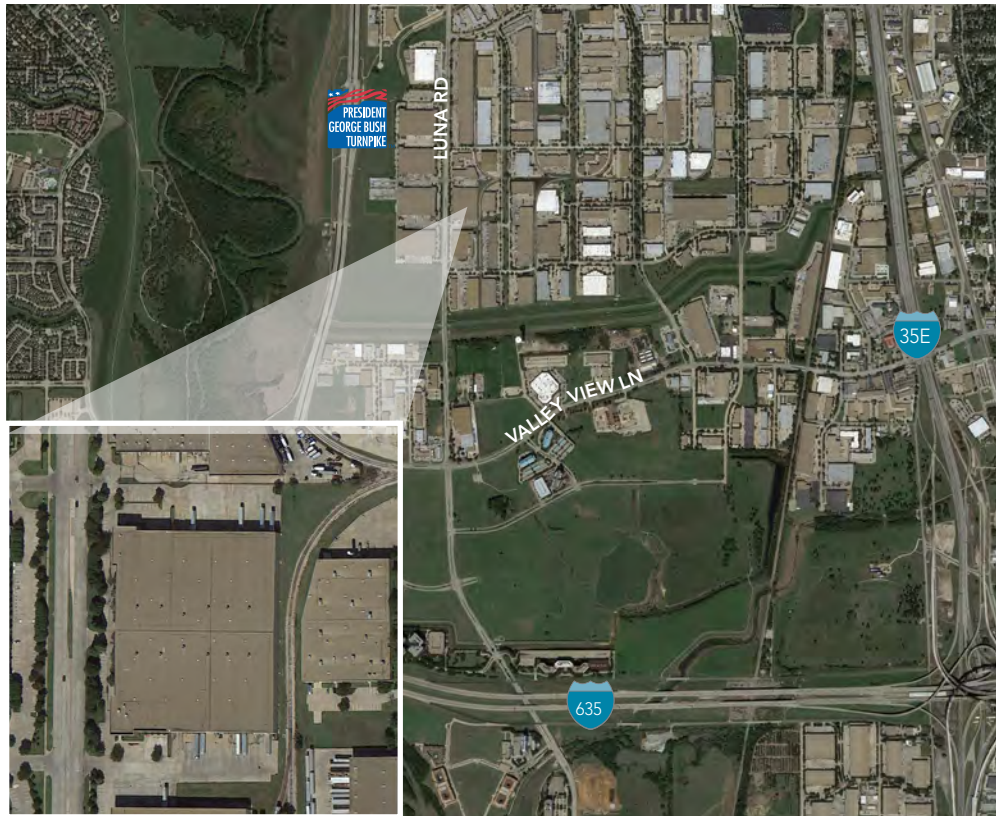
## CARROLLTON, TX

102,150 SF AVAILABLE



### AVAILABLE DETAILS

- 102,150 SF available
- Office: 3,389 SF
- White boxed warehouse
- 107 Car Parks
- Built in 1996
- ESFR sprinklered
- T-5 lighting
- 28' clear height
- 9 dock high Doors; 1 ramp, 7 dock levelers
- Power: 400 amps @ 480/277v
- Rail Served by Ft. Worth & Western
- Direct Access to I-35, I-635, George Bush Turnpike
- Frontage on Luna Road



For Leasing Information:

Blake Kendrick | 214.267.0472 | [bkendrick@streamrealty.com](mailto:bkendrick@streamrealty.com)

Eric Crutchfield | 214.267.0462 | [eric.crutchfield@streamrealty.com](mailto:eric.crutchfield@streamrealty.com)



CROW HOLDINGS  
INDUSTRIAL

# 2201 Luna Road

## CARROLLTON, TX

102,150 SF AVAILABLE

